


Windows EC update SOP 1.9

2012/8/22	Version: 1.0 Initial Version.
2012/8/29	Version: 1.1 Add ECWinFlash tools for windows.
2014/5/14	Version 1.2 Cancel the project name text
2014/11/11	Version 1.3 Add Notes
2015/05/27	Version 1.4 Change the update SOP to distinguish the instructions between automatic and manual updates
2018/12/17	Version 1.5 Add MPS update requirements
2019/01/19	Version 1.6 Add Notes
2019/04/25	Version 1.7 Add Notes
2019/04/25	Version 1.8 Add Notes
2020/12/22	Version 1.9 Add warning for win flash

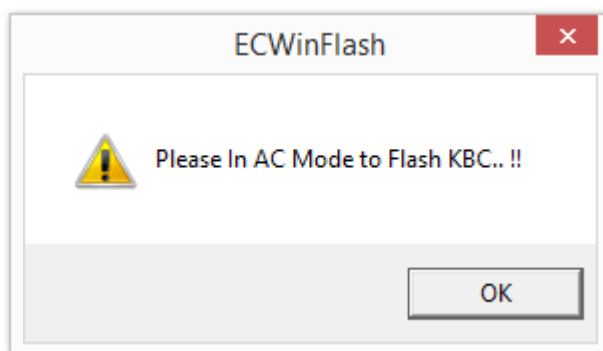
1. Manual update the EC for Windows version (using the ECWinFlash main program):

Warning!! : Don't flash EC as soon as system boot, please wait for about 1 minute to let the CC 3.0 loading in the lower right corner

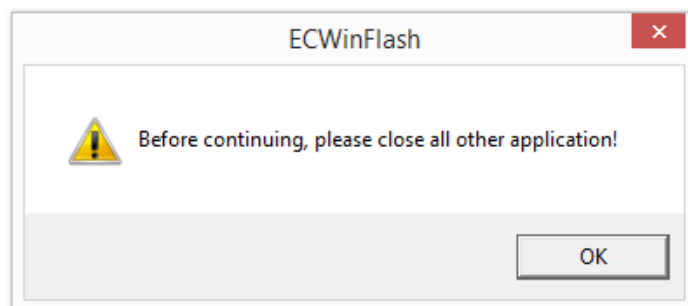
- a. Run the ECWinFlash program.

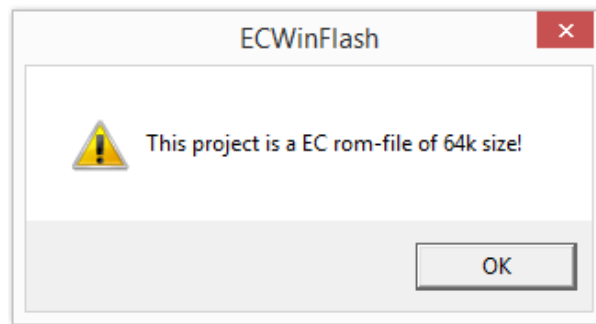
Name	Date modified	Type	Size
x64	2015/5/26 上午 09:33	File folder	
x86	2015/5/26 上午 09:33	File folder	
ECFLASH	2015/5/26 下午 03:48	Windows Batch File	1 KB
 ECWinFlash	2015/5/26 下午 05:24	Application	1,698 KB
eW510LU.P7	2015/5/25 下午 05:40	P7 File	58 KB
Ntpport.dll	2008/2/11 下午 09:11	Application extens...	114 KB

- b. Make sure to plug in the AC adapter before updating the EC, if you do not plug into the AC, a warning message will appear and the system will automatically quit the program.

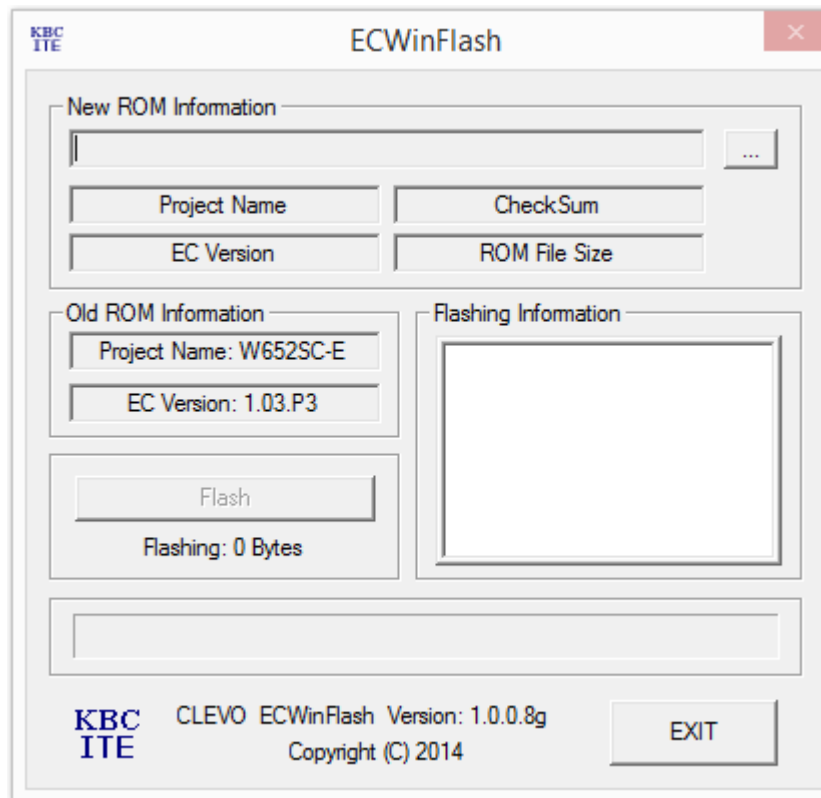


- c. The program will prompt a warning: Before running the ECWinFlash, it is suggested to close all of the other applications, the system will then prompt to indicate the model's EC size is 64K or 128K.

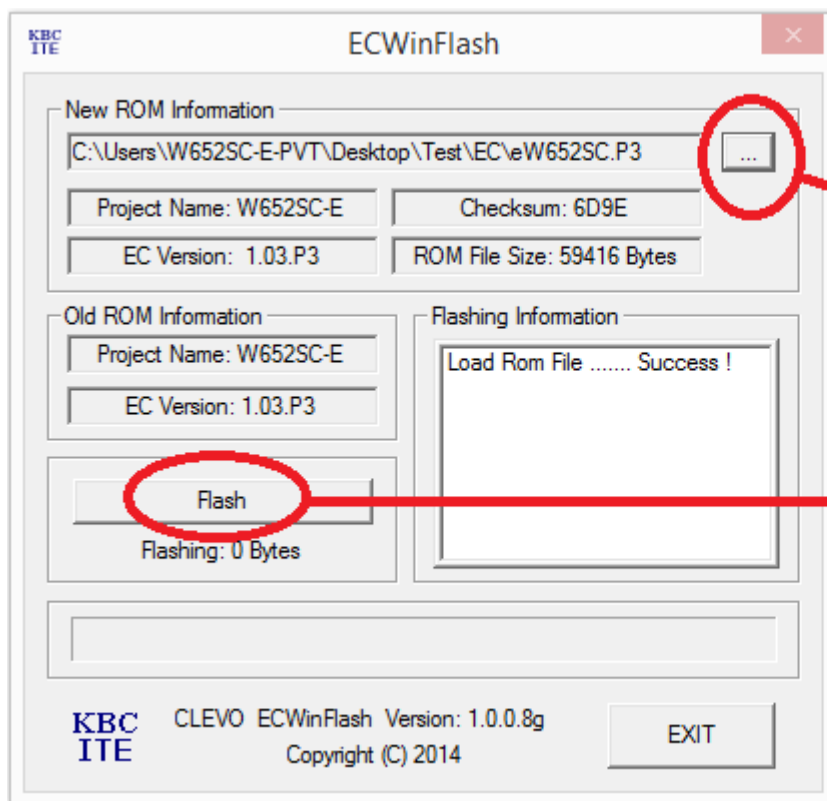




d. After pressing the OK button, the ECWinFlash window will appear.



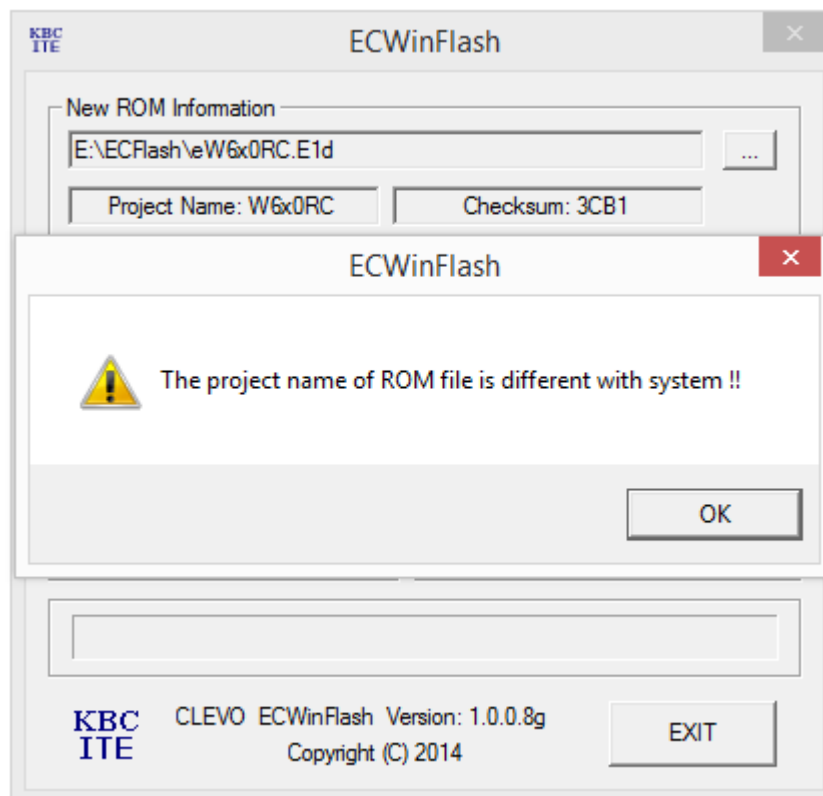
e. Please select the EC's file path, and then press the "Flash" button to update the EC.



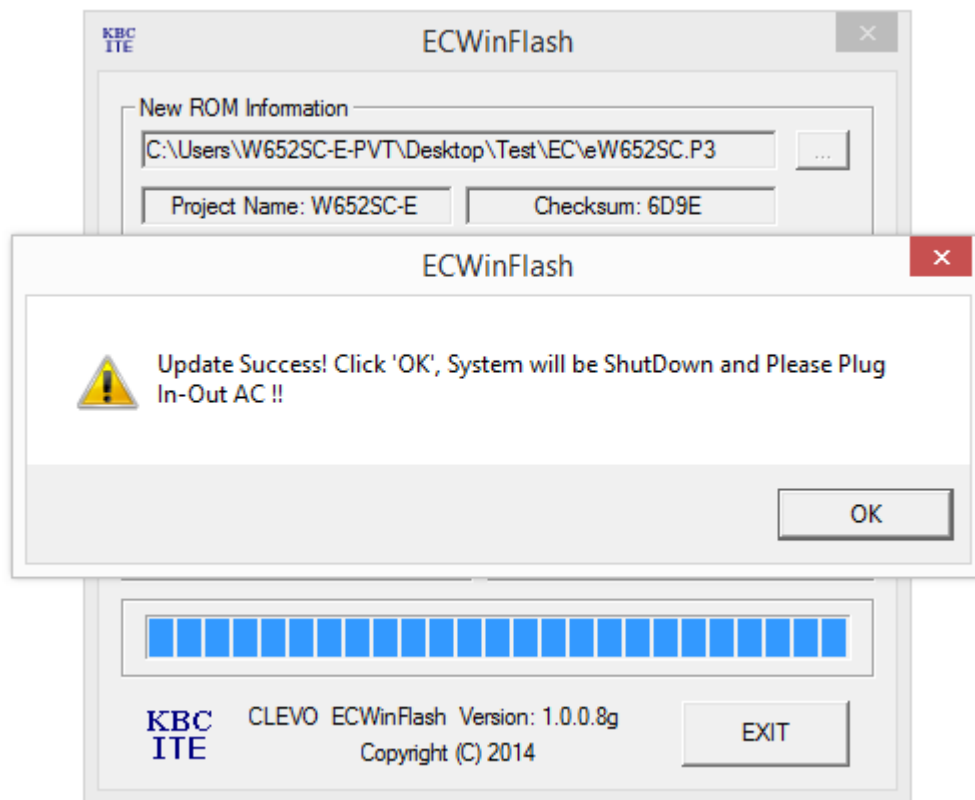
選擇要更新之EC檔案的路徑。

選擇後請按下Flash進行更新EC的程序。

- f. If the model type does not have the same Project name as the EC file to be updated, a warning message will appear, and the update program will automatically be terminated.



- g. After the EC update is completed, the program will prompt a warning, and the system will automatically shut down after selecting “OK”.



- h. After turning off the power, please unplug and re-plug the AC adapter before rebooting to complete the process of updating the EC.

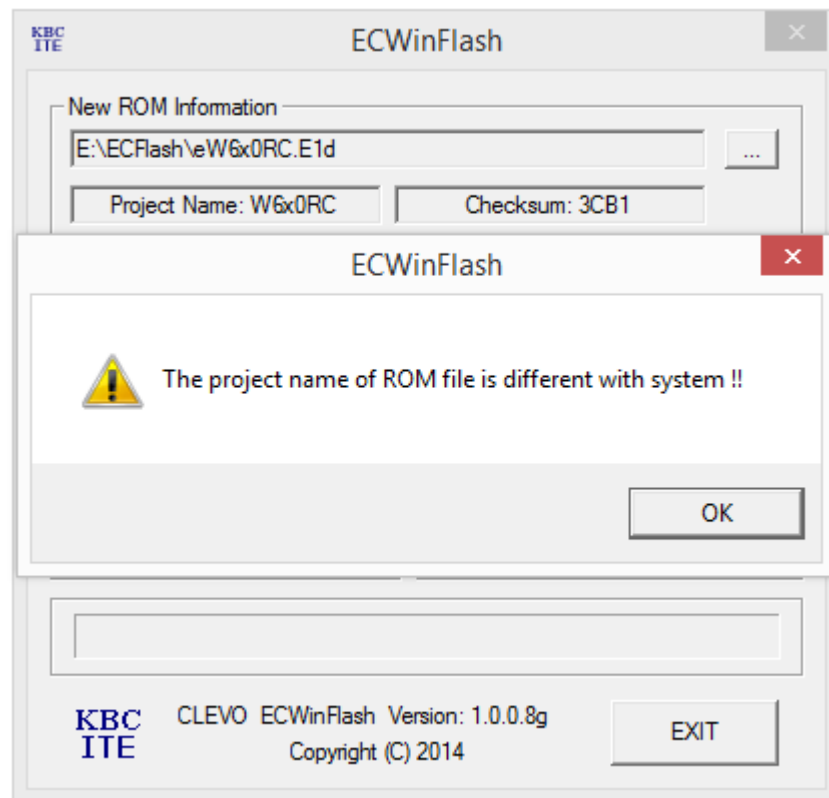
2. Automatic update the EC for Windows version (direct execute the ECFLASH.bat) :

Warning!! : Don't flash EC as soon as system boot, please wait for about 1 minute to let the CC 3.0 loading in the lower right corner

- a. Please make sure that the model's EC files are in the same folder as ECWinFlash.exe/ECFLASH.bat.

Name	Date modified	Type	Size
x64	2015/5/26 上午 09:33	File folder	
x86	2015/5/26 上午 09:33	File folder	
ECFLASH	2015/5/26 上午 09:33	Windows Batch File	1 KB
ECWinFlash	2015/5/26 上午 09:32	Application	1,698 KB
eW652SC.P3	2015/3/24 下午 04:28	P3 File	59 KB
Ntport.dll	2008/2/11 下午 09:11	Application extens...	114 KB

- b. Execute the ECFLASH.bat, and the system will automatically update the EC program.
- c. If the model type does not have the same Project name as the EC file to be updated, a warning message will appear, and the update program will automatically be terminated.



- d. After the EC update is completed, the system will automatically shut down.
- e. After turning off the power, please unplug and re-plug the AC adapter, then wait for the power led to turn orange, before pressing the power button to turn on the computer.

Notes:

1. During the Update EC process, do not press the K/B, use the mouse, plug the AC adapter, etc. or undertake any other inappropriate operation.
2. The Update EC needs to follow various steps to complete the process. During the process, the EC cannot be controlled, and the external status appearance is normal, such as the LED....etc.
3. If the system goes down while performing the Flash update, the EC will clear the internal ROM after 15 seconds, then automatically shut down. Please unplug the AC adapter and plug it in again, and the EC will again execute the auto load function.
4. Plugging and unplugging the AC should be done with an interval of greater than 3 seconds. (This number of seconds will vary depending on the model series.)
5. When the EC release note has been written to update the MPS firmware, step 5 must be executed. When the MPS firmware is burned out, wait for the power led to turn orange, before pressing the power button to turn on the computer.
6. If you update the MPS firmware, it is recommended to use the MPSVersion tool to check the version. If the version is read as 0x00 and the update is unsuccessful. The reasons are as follows:

- i. No switch
- ii. DC boot
- iii. AC plugging interval is less than 3 seconds

7. When the MPS update fails, it may be that the update data is incomplete and the system will not reboot to prevent abnormality.
8. In order to avoid the need to repeatedly check and burn MPS firmware every time, affecting the reboot time, the EC has a memory MPS firmware function. If there is no switch status, but wants to change the MPS firmware, you need to flash the EC firmware after adding the switch.